



S A N T A Y N E Z V A L L E Y
L O D G E # 2 6 4 0

BUGLE

J A N U A R Y 2 0 1 7

FROM YOUR EXALTED RULER

Happy New Year! I hope everyone had a safe and happy holiday. December was another great month for our Lodge. We had a lovely Memorial Ceremony for our departed members with a delicious omelet brunch following the ceremony prepared by our Chaplain Chef Nicole Ornelaz (with a little help from Stefan) who outdid herself. On the 16th we had our annual Christmas Party hosted by Keith and Judy Hinchcliffe who, along with their helpers, prepared an outstanding meal. Through the efforts of Jerry and Gail Plowman we hosted 4 families this year and showed them how Elks Care, Elks Share. Jerry Plowman read The Night Before Christmas and Nicole Smith helped to lead the kids in singing carols due to Bosco being under the weather. We had several outside events and Lodge rentals that helped make for a busy December. And of course the annual Sadecki Christmas Day ham dinner/potluck. They have been doing this for more years than I can remember. A big shout out to Marty Martinez who donated the beautiful Christmas tree that we have in our Lodge. His donation came after the December Bugle went to print but I want to make sure he is recognized for his generous donation.

Since I am writing this before New Year's Eve, I will go out on a limb and say the New Year's Party was a success. How could it not be with TC cooking?!?

Candy Canes for Major Project may be gone but check out the Snowflakes for January.



Remember, a Coin a Day and They'll Walk, Talk See and Play. Thank you to Melissa "Tink" Galloway for providing the Snowflakes.

On to what we can expect in January: January is the month the dues notices go out for the new Elk year. Please be on the lookout as they should be arriving in your mailboxes toward the end of the month. And make sure to check out the Bugle and Blasts for this month's dinners. It is Stefan and Nicole's month to cook so you know you can expect some delicious meals.

The first meeting in February is nomination night for 2017-18 officers. If you are interested in being an officer or committee chair, please contact any current officer or PER. We will be happy to answer any questions you may have. A little clarification on the nominations and election process for lodges that meet twice a month (as opposed to four): If you are nominated for an office on the first meeting night, and there is no one else nominated, you are it. If there is more than one member nominated, we will ballot on election night at the second meeting. The only way to re-open nominations on election night is if no member was nominated or if someone declines. If you have any questions or concerns regarding this process, please contact any PER or myself and we will be happy to address any question you may have.

Fraternally,

Ines Greenwald, PER

2016 - 2017
LODGE OFFICERS



Exalted Ruler
Ines Greenwald PER



Leading Knight
Stefan Ornelaz



Loyal Knight
Steve Larson



Lecturing Knight
Bodie Bettencourt



Secretary
Keith Hinchcliffe PER



Treasurer
Phil Daughton PER

2640'S NEWEST MEMBERS



The 2640 Class of 12/1/2016 was one of our largest in years!

Please welcome (L-R) Julie (Jules) Ponzini and Shawna Hendricks, both proposed by Keith Hinchcliffe PER; Clint Carpenter and Scott Flores, both proposed by Marty Martinez (who also donated the tree in the background!);

Bailey Adams, proposed by Claire DuVall; and Carla Miranda, proposed by Kelley Sadecki PER. This is a talented and already-involved group of people that we hope to see at events and dinners, maybe working behind the scenes, and enjoying everything our Lodge has to offer. Please make them feel welcome when you see them in the Lodge or our community!

2016 - 2017
LODGE OFFICERS



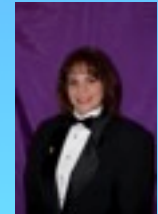
Esquire
Janelle Willis



Chaplain
Nicole Ornelaz



3 Year Trustee
Don Hart



2 Year Trustee
Kelley Sadecki PER



1 Year Trustee
Gary Skippon

ESAU INTERIORS

Upholstery • Blinds • Shutters • Drapes

HunterDouglas Authorized Dealer

Gary and Judeen Esau

(805) 688-7452 *since 1983*

1060 Faraday Street • Santa Ynez, CA 93460



Inner Guard
Mario Baldomero



Tiler
Jennifer Mullins



Officer at Large
Greg Packham PER

**2640's PAST EXALTED
RULERS**

- 1982-83 HARRY BLACKSTOCK*
 - 1983-84 KEN RAMSEY
 - 1984-85 AL PAINE*
 - 1985-86 KEN OLSON
 - 1986-87 DICK MILLER*
 - 1987-88 HENRY SMITH
 - 1988-89 LON RIGONI*
 - 1989-90 JIM SMITH*
 - 1990-91 TRUE BEACH
 - 1991-92 JACK PRESTON*
 - 1992-93 LON RIGONI*
 - 1993-94 ROBERT PARSON
 - 1994-95 BILL DOUDS
 - 1995-96 MONTE LARSEN
 - 1996-97 ROBERT PARSON
 - 1997-1998 HENRY SMITH
 - 1998-99 HOWARD SAHM*
 - 1999-2000 HOWARD SAHM*
 - 2000-01 LEWIS WATKINS
 - 2001-02 FRANK TAYLOR*
 - 2002-03 RUTH SAHM
 - 2003-04 WILLIAM SPEULDA
 - 2004-05 PATRICK SADECKI
 - 2005-06 PATRICK SADECKI
 - 2006-07 GREG BOVERSON*
 - 2007-08 EVERETT PIKE
 - 2008-09 KELLEY SADECKI
 - 2009-10 KEITH HINCHCLIFFE
 - 2010-11 DIANNE WITTENBROCK
 - 2011-12 JERRY PLOWMAN
 - 2012-13 PHIL DAIGHTON
 - 2013-14 PHIL DAIGHTON
 - 2014-15 KELLEY SADECKI
 - 2015-16 REBECCA LEWIS
- *DECEASED



CHRISTMAS PARTY 2016

Hate that we have to, so glad that we can. Thanks to grants we're eligible for, we were able to help three families this year at our annual Christmas Party. The kids we supported ranged in age from 2½ to 12, and we welcomed back a 2015 alum. Another 2015 family "paid it forward" by donating to this year's families!

Great thanks to the Daightons, Plowmans and Hinchcliffes, all of them PER couples, for their support of this event for the last several years, and hopefully many more to come.

THOUGHT FROM THE COWBOY

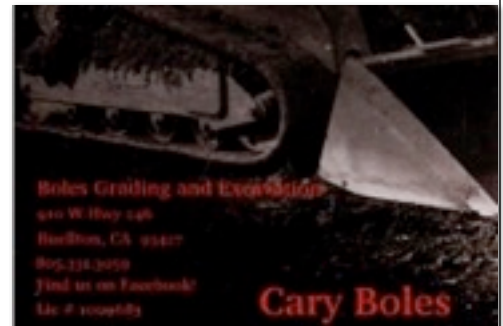
Always remember to forget the troubles that pass your way, but NEVER forget the blessings that come each day.



CRYING TOWEL

You trying to help us keep up with California and the drought?
If ya'd come to meetings, we could open the floodgates and give
12/1/16 the money away! 12/14/16

Duane Landis	\$80	Jerry Plowman
Patrick McLaughlin	\$90	Larry Reece
Dennis Craine	\$100	Don Reid



SKIPPONS FIREWOOD
Gary & Jeanette Skippon
 2980 Homestead Trail
 Santa Ynez, Ca. 93460-9167
(805) 688-3800
 Cell Ph. (805) 714-4405 or (805) 714-4406

Blood Drive
Sponsored by the
Santa Ynez Valley
Elks Lodge #2640

At the Veterans
Memorial Building
in Solvang

Thursday,
January 12
2:30-6:00pm

To schedule an
appointment please
call 543-4290 ext. 0 or
online at
www.blood4life.org
using the sponsor
code: 1085



New year. New Life!
2017
#blooddonormonth



SAVE THE DATE

**GIVE BLOOD,
SAVE A LIFE!**

If you're eligible, we'd love to have you donate at our first-ever SYV #2640-sponsored blood drive! United Blood Services (UBS) will be collecting blood at the Solvang Vets Hall, and there are appointments available. Sign up at the Lodge, by [emailing](mailto:), or logging into unitedbloodservices.org.

Donating blood doesn't only help others, but UBS keeps track of some of your wellness measures (cholesterol, blood pressure, hemoglobin), and you can earn points towards rewards (t-shirts, gift cards, movie tickets, or giving back to UBS).

If you can, please do!

ELKS SCHOLARSHIPS AVAILABLE

Did you know the Elks are the 3rd largest provider of scholarships in the United States, behind the US Government and the Bill and Melinda Gates Foundation? Here are a couple ways deserving students can apply (more info at elks.org or chea-elks.org):

Legacy Awards

Legacy Awards are \$4,000 scholarships (\$1,000 year for four years) for children and grandchildren of Elks members (those that became members on or before April 1, 2013) in good standing. Applicants must be high school seniors, and are judged on knowledge, charity, community and integrity

Applications for the 2017 contest are available ONLINE ONLY and are due by noon Central Time on February 3, 2017. The Foundation will offer a total of up to 250 awards in the 2016 contest. More information and the application are available at www.elks.org/enf/scholars/LEGACY.

Vocational Grants

The program is open to anyone residing in California or Hawaii who is a US citizen and planning to pursue an eligible vocational/technical course resulting in a certificate or two-year degree and leading to employment opportunities. While graduating high school seniors may apply, it is not limited to high schoolers—in fact, it is open to all prospective students who require training or retraining to compete in the workplace.

The Vocational Grant will be between \$500 and \$2,000 for one academic year, with an option to renew for one additional year.

The definition of an eligible program is a two-year or less vocational/technical program culminating in a terminal Associate degree, diploma or certificate, but less than a Bachelor's degree. Students planning to transfer to a four-year school to pursue a Bachelor's degree are not eligible to apply.

Recently approved courses include a 6-month Police Academy, 13-month Cosmetology, 3-month Lineman, 13-month Veterinary Tech, and 2-year Fire Science certifications

Applications must be filed with the Scholarship Chairman, Exalted Ruler, or Secretary of the Elks Lodge having jurisdiction in the area of the student's legal residence. More information can be obtained at www.chea-elks.org.

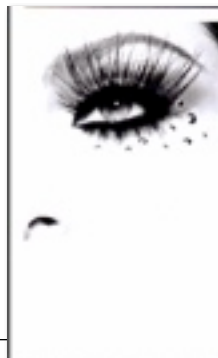
DONALD E. BRATT, MAI, SRA

REAL ESTATE APPRAISAL & CONSULTING
SINGLE FAMILY, RANCH, COMMERCIAL/INDUSTRIAL
LEASED LAND, SPECIAL USE, LITIGATION



1623 MISSION DRIVE, SUITE 6
SOLVANG, CA 93463
805-693-5511

donbratt@donbratt.com



Cindy Larson

Esthetician/Lash Specialist/
Bella Lash Instructor

Salon V

3553 Monarch St
Santa Ynez, Ca. 93460
805-686-9078 Salon
681-880-2343 Cell
Book Me @
www.styleseat.com/cindylarson

LODGE ACTIVITIES

Subject to Change. Items marked with * require staffing (please call the Lodge at 688.3448 for information, or email info@syvelks.com)

Lounge Hours: Mon-Fri 3-7PM, Sat 2-7PM, Sun 1-7PM

1	January - Stefan Happy 2017!	2 - 2PM: House Mtg	3	4	5 - 5:30-6:30PM: Light Supper 6:15PM: Trustees Mtg 7PM: Lodge Mtg	6 - *6:30PM: Beef Stroganoff, \$15	7
8		9	10 - 6PM: Game Night	11	12 - 2:30-6PM: SYV Elks-sponsored Blood Drive, Solvang Vets Hall	13 - *6:30PM: TC's BBQ Chicken, \$13	14
15		16 - 5:30PM: PER Mtg 6PM: House Mtg	17	18	19 - 5:30-6:30PM: Light Supper 6:15PM: Trustees Mtg 7PM: Lodge Mtg, Initiation	20 - *6:30PM: Shredded Beef Brisket, \$15	21
22 - 10AM-noon: Sunday brunch. 2PM: Jamboree Mtg	23	24	25	26	27 - *6:30PM: Baby Back Ribs, \$13	28	
29	30 - 6PM: House Mtg	31					

February - Steve			1	2 - 5:30-6:30PM: Light Supper 6:15PM: Trustees Mtg 7PM: Lodge Mtg, PER Night. Nominations for 2017-18 Officers	3 - *6:30PM: Beef Enchiladas	4
5	6	7 - 6PM: Game Night!	8	9	10 - *6:30PM: Valentines Dinner! Pot Roast	11
12	13 - 5:30PM: PER Mtg 6PM: House Mtg	14	15	16 Happy Bday Elks! 5:30-6:30PM: Light Supper 6:15PM: Trustees Mtg 7PM: Lodge Mtg, Initiation, Election of 2017-18 Officers	17 - *6:30PM: TC's BBQ Beef Ribs	18
19 - 10AM-noon: Sunday brunch. 2PM: Jamboree Mtg	20	21	22	23	24 - *6:30PM: Meatloaf	25
26	27	28				

ELK OF THE MONTH

Shirley Hollister is a staunch supporter of SYV Support the Troops, not only helping pack boxes with Don at her side, but making the reminder calls every month to rally other volunteers. She keeps track of the hours donated so we can add to the Elks' charitable contributions. Did you know Elks nationwide donated over **8 MILLION HOURS** in services like these last Elk year? Thanks, Shirley, for supporting the troops, our community, and the Elks. Happy to name you as Elk of the month.

-Ines Greenwald, PER

JANUARY BIRTHDAYS

If you're a January Birthday Elk and a member of our Lodge, please let us treat you to dinner this month. Have a wonderful month celebrating YOU!

HAPPY BIRTHDAY!!

James Neary	01	Christine Goldie	15
Ed Betts	01	Bobette McClellan	15
Allen Castillo	03	Barbara Spencer	15
Richard Stewart	04	Donald McIntyre	19
Ralph Zabala	05	Baldomero Santiago	19
Kristi Sharpe	06	Janelle Willis	22
Frank Grand	07	Joe Reese	23
Natalie Velotta	07	Fred McNeil	25
Jim Matsukas	07	Brad Prows	25
Louis Rovtar	12	Glenn Johansen	26
Mack Brown	12	Aaron Schwarzwalter	27
Pamela Johnsen	14	Justin Philley	29
Jeanne Wafer	15	Tony Valdes Jr	31

Elks Care - Elks Share

Address Service Requested

info@syvelks.com

E-Mail:

805/688.7687

Fax:

805/688.3448

Phone:

www.syvelks.com

Santa Ynez Valley Elks
PO Box 1072
Santa Ynez CA 93460